



# LARMAX HOMES



**LaToya Jackson**  
House Manager

[latoya@larmaxhomes.com](mailto:latoya@larmaxhomes.com)



**Tracy Hauri**

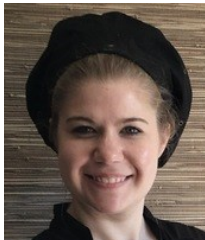
Chief Financial Officer  
240-599-5051 (Phone)  
301-365-3341 (Fax)  
[tracy@larmaxhomes.com](mailto:tracy@larmaxhomes.com)



**Shanell Smith**

VP of Operations  
301-651-1848  
[shanell@larmaxhomes.com](mailto:shanell@larmaxhomes.com)

## YOUR IPSWICH TEAM CONTACTS



**Maggie Carrick**

VP of Food & Dining  
610-914-6704  
[maggie@larmaxhomes.com](mailto:maggie@larmaxhomes.com)



**Linzeka Fields, RN**

Director of Nursing  
301-525-1197 (Cell)  
301-812-4462 (Fax)  
[linzeka@larmaxhomes.com](mailto:linzeka@larmaxhomes.com)



**Christine Hayden, RN**

Delegating Nurse  
240-676-8909 (Cell)  
301-812-4462 (Fax)  
[christine@larmaxhomes.com](mailto:christine@larmaxhomes.com)



**Megann Griffith**

VP of Engagement  
240-534-3130  
[megann@larmaxhomes.com](mailto:megann@larmaxhomes.com)

### MAILING ADDRESS:

5807 IPSWICH ROAD, BETHESDA, MD 20814

### BILLING ADDRESS:

LARMAX HOMES P.O. BOX 59664, POTOMAC, MD 20859

### HOME PHONES:

301-278-8510 (House) | 301-525-6310 (Cell) | 301-530-0074 (Fax)