



# LARMAX HOMES



**Shelly-Ann Jefferson**  
House Manager  
[shellyann@larmaxhomes.com](mailto:shellyann@larmaxhomes.com)



**Desiree Harding**  
Assistant House Manager  
[desiree@larmaxhomes.com](mailto:desiree@larmaxhomes.com)

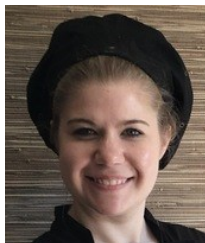


**Tracy Hauri**  
Chief Financial Officer  
240-599-5051 (Phone)  
301-365-3341 (Fax)  
[tracy@larmaxhomes.com](mailto:tracy@larmaxhomes.com)



**Shanell Smith**  
VP of Operations  
301-651-1848  
[shanell@larmaxhomes.com](mailto:shanell@larmaxhomes.com)

## YOUR STONEHAM TEAM CONTACTS



**Maggie Carrick**  
VP of Food & Dining  
610-914-6704  
[maggie@larmaxhomes.com](mailto:maggie@larmaxhomes.com)



**Linzeka Fields, RN**  
Director of Nursing  
301-525-1197 (Cell)  
301-812-4462 (Fax)  
[linzeka@larmaxhomes.com](mailto:linzeka@larmaxhomes.com)



**Christine Hayden, RN**  
Delegating Nurse  
240-676-8909 (Cell)  
301-812-4462 (Fax)  
[christine@larmaxhomes.com](mailto:christine@larmaxhomes.com)



**Megann Griffith**  
VP of Engagement  
240-534-3130  
[megann@larmaxhomes.com](mailto:megann@larmaxhomes.com)

### MAILING ADDRESS:

6505 STONEHAM ROAD, BETHESDA, MD 20817

### BILLING ADDRESS:

LARMAX HOMES P.O. BOX 59664, POTOMAC, MD 20859

### HOME PHONES:

301-530-8480 (House) | 301-525-6300 (Cell) | 301-493-7831 (Fax)